

CAREERS NETWORK

NEWSLETTER



Spring 2025 **Edition 23**

WiME Careers Fair

The Women into Manufacturing and Engineering (WiME) programme provides a platform for women from locally based companies to showcase their amazing Science, Engineering, Maths and Technology careers.

With great pay and progression opportunities, careers in our engineering, manufacturing, digital and renewable industries are a great choice for women and girls – but many female pupils stop being interested in STEM subjects at secondary school and don't go on to study them further or access apprenticeship opportunities.

To help show girls how exciting and varied these careers can be, we've invited amazing women working in some fantastic businesses across the region to our next careers event, taking place at the Humber Royal Hotel on Thursday 27th March.

Teachers and Careers Leaders can sign up to bring along a group of students in the morning/early afternoon by contacting Vicky Booth at Vicky.Booth2@lincolnshire.gov.uk

There is also a public careers event from 4.30pm to 6.00pm, where women, older girls and pupils with their parents/carers can attend in their own time to find out more.

Women into Manufacturing and Engineering Careers Fair

SAVE THE DATE

Humber Royal Hotel
Thursday 27th March 2025

- ▶ **Morning/Early Afternoon** - Schools & Colleges Only
- ▶ **4:30pm to 6pm** - Open to the Public



Please email Vicky Booth at Vicky.Booth2@lincolnshire.gov.uk to register

Come along to our careers fair and meet our partners from business and industry and hear about jobs and opportunities for women in manufacturing and engineering across our region.



Parents' Careers Evening

FREE EVENT for parents, carers and guardians

Wednesday 19th March,
4pm to 7pm, Humber Royal Hotel

**Employers | Careers Advice | Student Finance
Apprenticeships | Colleges | Universities Guest
Speakers | Industry Experts | with over 30 stalls
and more!**

Book Now



Scan the QR code or email: skills@nelincs.gov.uk



Funded by
UK Government



Following the success of the event last year, a further careers evening for parents will take place on Wednesday 19th March. Please share with parents/carers, registration is required, and the booking link is <https://forms.office.com/e/ajv7k6feF5>



THE CAREERS & ENTERPRISE COMPANY

Greater Lincolnshire Enterprise Adviser Network and Career Hub Update

Labour Market Information (LMI)

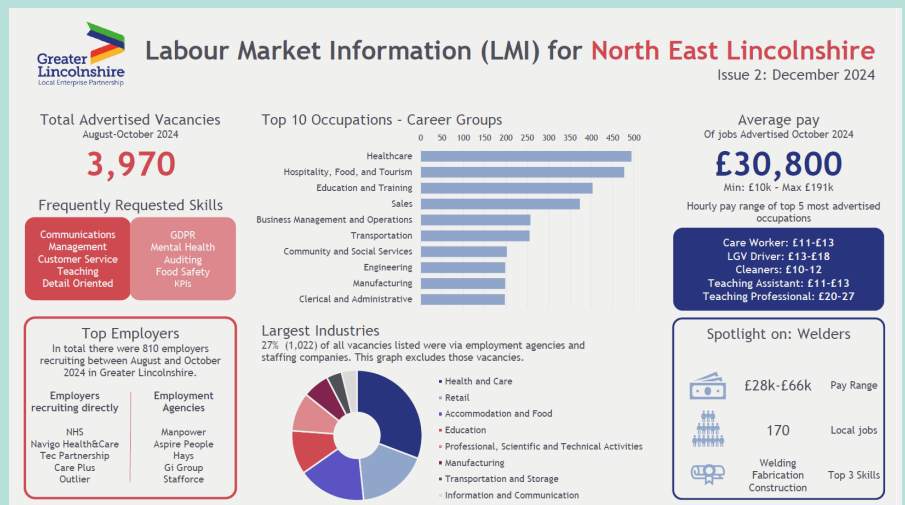
LMI provides young people with an insight into careers information and local economic opportunities. All activities related to this can be included when you are assessing Gatsby Benchmark 2 such as employer encounters, offsite visits and curriculum materials.

To support teaching staff the Careers Hub will once again be hosting Teacher Encounters in the summer term but have also produced quarterly LMI posters which can be found via 'The World of Work' website. [The World of Work](#). Alex Nightingale recently hosted a webinar explaining how best to use the posters whilst colleague Debbie Boon has produced materials that you can adapt to support its use.

LMI Webinar - <https://youtu.be/sKeLLJt0FoY>

Lesson Plan - https://padlet.com/lep_ecs/greater-lincolnshire-lep-careers-hub-tzudqat7zzjo3vhd/wish/mDRxWBP9XwrLQjb1

Activity Sheet - https://padlet.com/lep_ecs/greater-lincolnshire-lep-careers-hub-tzudqat7zzjo3vhd/wish/L8KjW9r5O9xEaJbv



CEC Leadership Reviews

To support the achievement of the new Gatsby Benchmarks that will come into effect in September 2025. The CEC has developed the Careers Impact System (CIS) made up of a Maturity Model Framework, Leadership Review and Peer-to-Peer Reviews and supports the national shift towards providing an impactful careers programme embedded within the whole school.

Using a nationally standardised framework ensures that all young people have access to high quality careers provision.

CEC Maturity Model Framework

The Maturity Model Framework is designed to be used within a Leadership Review where key stakeholders, including the Principal or Headteacher annually monitor outcomes for careers.

Further to this schools can get involved with peer-to-peer reviews this provides an opportunity to deep dive into specific themes and develop and share good practice.

If you are interested in being involved in a peer-to-peer review please contact Vicky Booth, NEL Enterprise Coordinator Vicky.Booth2@lincolnshire.gov.uk

Theme 1	Theme 2	Theme 3
Careers leadership, vision and intent, and planning for development (Benchmark 1)	Addressing the needs of all learners and impact evaluation (Benchmarks 1 and 3)	Understanding of labour market information (LMI) and future pathway options (Benchmarks 2 and 7)
Theme 4	Theme 5	Theme 6
Linking curriculum learning to careers (Benchmark 4)	Encounters with employers/employees and experiences of the workplace (Benchmarks 5 and 6)	Personal Guidance (Benchmark 8)

Innovate & Include: Harnessing SEND Talent

To support increased employer engagement within SEND schools, Alex Nightingale will be hosting an employer focussed SEND event on 19th March 2025 at the Lincolnshire Showground.

This event aims to help raise confidence in businesses to consider SEND as a possible recruitment avenue and to help fill skills gaps. The day will consist of some 'Talentino' delivery and employers sharing their own positive experiences.

If you know of an employer within your network that would welcome the opportunity to learn about our fantastic SEND students please share the registration link:

<https://www.eventbrite.co.uk/e/1037868632017?aff=oddtcreator>

SEND Employment Forum - Calling all organisations!

The Special Educational Needs and Disabilities, SEND Employment Forum is a great opportunity for you to learn more about recruiting young people with additional needs.

These students bring a range of skills and positive attributes to any organisation, have high aspirations and help your business or organisation to become more inclusive.

Various organisations already take advantage of our supported internships offer including Diana Princess of Wales Hospital, Humberside Police, and North East Lincolnshire Council.

As an intern, young people ages 18+ who have an Education, Health and Care Plan cover three rotations in the host business covering a variety of jobs, with the support of a job coach.

At the SEND Employment Forum you will hear from guest speakers, network, and learn more about ways you could become involved and influence the future of Supported Internships in North East Lincolnshire

The forum is held every 8 weeks at venues across North East Lincolnshire.

If you would like to know more about SEND and post-16 opportunities or would like to attend the SEND Employment Forum please contact Annie Cook at askannie@nelincs.gov.uk



Join Our Webinar: Launching MyPATH Careers Resource for Primary Schools (Careers Hub)

We are excited to invite all primary schools in Greater Lincolnshire to our upcoming webinar on Wednesday 26th February from 4pm to 5pm, where we will launch the MyPATH resource.

This fully funded resource will be available for the next 18 months, providing a fantastic opportunity to integrate careers education into your curriculum and inspire your students. Join us to explore the variety of resources available and learn how they can help build your students' aspirations and confidence.

The MyPATH team will guide us through some of these resources during the webinar and will be available to answer any questions. Don't miss this chance to enrich your teaching and broaden your students' horizons.

To receive an invite to the webinar, please contact the Careers Hub Alex.Nightingale@lincolnshire.gov.uk

SEND site on the Lincs2 website

Children’s Health & Wellbeing Fayre

A free fayre on Sunday 9th February at Cleethorpes Leisure Centre from 10.30am to 2.30pm for children, parents, carers and young people.

Lincs Inspire will be joined by a host of local organisations from the local community, voluntary, public and charitable sectors and will include:

- Lincs Inspire – Leisure, Archives, Sports Development
- Carers Support Centre
- Compass Go
- East Marsh Community Space
- Fostering & Adoption
- Inclusive Interactions (Makaton)
- North East Lincolnshire Parent Carer Forum
- Nunny’s Farm
- St Andrew’s Hospice
- The Book Guy
- The Canopy Community Hub
- Toddle Talk
- Twinkle Pop Slime

Aimed at raising awareness of the support available for children and young people in North East Lincolnshire, as part of Children’s Mental Health Week Children’s Mental Health Week is a national event taking place from the 3rd to the 9th February.

Please share and for more information click <https://lincinspire.com/childrens-fayre/>

Children's Inspire
HEALTH & WELLBEING fayre

FREE EVENT
SUNDAY 9TH FEBRUARY, 10.30AM TO 2.30PM
CLEETHORPES LEISURE CENTRE
 #CHILDRENSMENTALHEALTHWEEK

Families, care workers and young people - all welcome.

A family fun day with activities, information, fun and games, from:

LINCS INSPIRE,
 TODDLE TALK, FAMILIES FIRST
 INCLUSIVE INTERACTIONS (MAKATON)
 FOSTERING & ADOPTION,
 THE CANOPY COMMUNITY HUB
 EAST MARSH COMMUNITY SPACE
 TWINKLE POP SLIME, NUNNY'S FARM
 COMPASS GO, CARERS SUPPORT CENTRE
 THE BOOK GUY, ST ANDREW'S HOSPICE

ACTIVITIES:
 GIANT INFLATABLE SLIDE
 SOFT PLAY
 TOTS DISCO*
 BISCUIT DECORATING*
 FENCING (OVER 8s)*

*BOOKING REQUIRED
lincinspire.com/childrens-fayre

MATHS HUBS
 YORKSHIRE AND THE HUMBER

ITT Conference 2025

Join us for our one-day event for ITT students and their mentors, designed to inform and inspire you to learn more about 'Teaching for Mastery'

Date: Friday 28th February 2025
Time: 9.00am – 2:30pm
Location: OIE Conference Centre, DN6 7EQ

Yorkshire and Humber Maths Hubs - Annual Conference

This is always a popular event which generates positive feedback every year. Spaces are limited and allocated on a first come, first served basis. To register please visit [here](#).

Message from Hayley Gilham, YPSS Operational Manager (Employability)



Young People’s Support Service’s (YPSS) Level 6 qualified Careers Advisers provide a free impartial information advice and guidance service to targeted students in year 11 across all academies in North East Lincolnshire. We hold the DfE owned Matrix Standard, ensuring the delivery of high-quality information, advice and guidance (IAG) to young people and are registered with the Career Development Institute (CDI).

We also offer additional purchased services such as careers guidance for students who fall outside our targeted service offer and single or 3 year destination tracking reports for students from previous years.

If you have any queries or for more information about our destination report service please contact YPSS.MIS@nelincs.gov.uk

We have been successfully accredited with the **matrix** Standard for delivering high quality information, advice, and guidance!

#makeIAGbetter @matrix_Standard **matrix Standard**